

Our Manufacturing Facility



CLEANROOM SOLUTION PROVIDER



Addresses:-

Registered Office
Chempharm Industries India Private Limited
60, Dayanand Marg, Daryaganj,
New Delhi – 110002, INDIA
Telephone Nos.: +91 9870503290
Email id : sales@chempharmindia.com

Works
Chempharm Industries India Private Limited
Khasra No. 84/11/2, 12 and 13,
Village Akbarpur Barota,
Distt Sonapat, Haryana – 131028, INDIA
Telephone Nos. – +91-130-2325059

E-mail: sales@chempharmindia.com

Website: www.chempharmindia.com



CLEANROOM



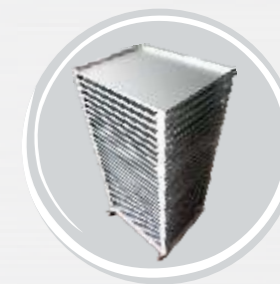
CLEANROOM EQUIPMENTS



DOORS



HVAC



STAINLESS STEEL FURNITURE

- Clean Room from Class 100 to 100k
- HVAC / BMS / Electrical Systems for Clean Room
- Clean Room Equipments (LAF, Air Showers, Pass Boxes, Etc)
- Stainless Steel Furniture for Pharmaceutical / Healthcare and Labs.

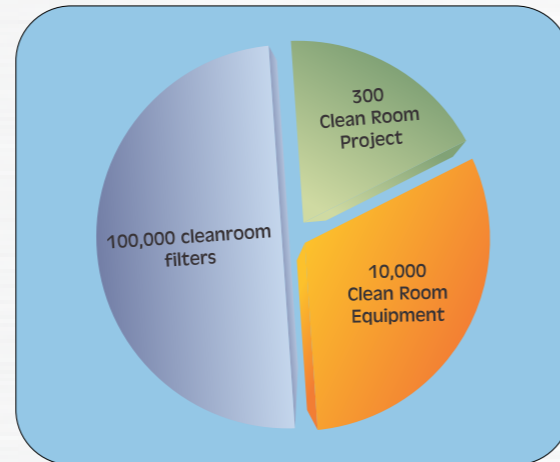
UNLOCK THE POWER OF ONE

Chempharm started its operations in the year 1985 with a small manufacturing unit for producing HEPA filters. Year on Year the company kept on doing forward integration in the similar field by adding Clean room equipment's in 1990 , Sandwich PUF panels and clean room turnkey in 1995 , HVAC and BMS systems in 2000 and so on. Last year the company expanded it's manufacturing facility to multi-fold. With the backing of 30 years of experience and latest state of the art manufacturing facility , we are one of the favored turn-key clean room supplier by most of the consultants in India. Chempharm is one of the oldest company in India which offers Turnkey cleanroom, Equipment's with documentation and Validations as per International standards .

Oldest Cleanroom System

MAXIMUM NUMBER OF CLEAN ROOM / EQUIPMENT AND FILTERS

- 1) Chempharm has one of the largest reference list for Clean room business.
- 2) More than 300 project's implemented in India and Overseas.
- 3) More than 10,000 Clean room Equipment's are in operation in India & Overseas.
- 4) More than 100,000 Cleanroom filters are supplied in India and Overseas.



TEAM CHEMPHARM

Chempharm is one of the few companies which has full fledge following expertise:-

- Manufacturing of HEPA, Bag and Microvee filters.
- Manufacturing of clean room equipments and filter housings.
- Experts for Quality control with high end testing equipments.
- Documentation and validation.
- Designing of Clean room and modular systems.
- Designing of HVAC and BMS system with electricals.
- Implementation team for panels, HVAC, Electrical & BMS.
- Support teams for – Costing , Supply chain , HR , IT, Accounts, Safety etc.



LARGE MANUFACTURING BASE

- High end manufacturing machines like LASER, TURRET, CNC BEND etc.
- 3 Nos Presses and pressure pumps for sandwich panels
- Powder Coating Plant
- Paint Booth
- Pallet Trucks
- MIG & TIG Welding Machines
- 3D Pipe CNC Based Pipe Bender
- Plasma Cutting
- MISC Machines Like Notcher , Presses Etc



CLIENTS

PHARMACEUTICALS

CLEAN ROOM/HVAC/CLEAN ROOM EQUIPMENTS



FOOD INDUSTRIES

CLEAN ROOM/HVAC/ STAINLESS STEEL FURNITURE



GENERAL & ELECTRONIC INDUSTRIES

CLEAN ROOM/HVAC/SS EQUIPMENTS



LAB & HOSPITAL

CLEAN ROOM/HVAC/ EQUIPMENTS



OVER SEAS PROJECTS

BANGLADESH / NEPAL / KENYA / ETHIOPIA/ZAMBIA/KUWAIT CLEAN ROOM / HVAC / TURNKEY



HARD-WALL CLEAN ROOMS



Cleanrooms are divided into 2 categories – Positive and Negative pressure clean rooms.

Positive pressures clean rooms : Air leaks from doors , ceiling or walls etc due to positive pressure. The application is such that air in the room is not hazardous .

Positive Air pressure clean rooms normally has air pressure of 0.02 Inch to 0.2 Inch water column.

Clean rooms are further graded as class 100, 1000, 10,000 and 100,000 /ISO Class 3 , 4 , 5 & 6

Negative pressure clean rooms are used for hazardous manufacturing process using corrosive, flammable or those pharmaceutical / Healthcare product which can harm human being and environment if the air comes in contact with any person. . Bio safety labs are negative pressure clean room and are classified for Level P-2 and P-3.

BSL Level 2 are meant for general clean labs normally operates at marginal cleanliness with slight negative air pressure.

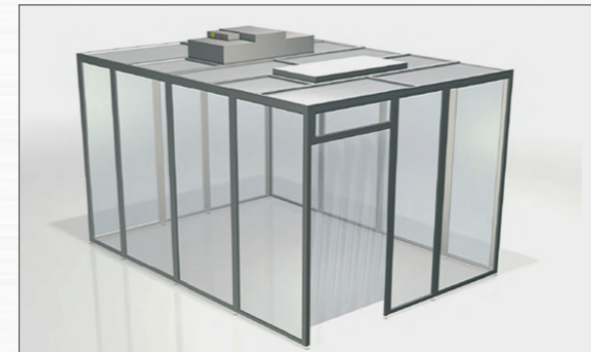
BSL Level 3 are with 100% exhaust through HEPA filters.

Clean rooms are used in electronic , pharmaceutical , defense , research , Aerospace and Healthcare industry .

Hardwall clean rooms are made by using sandwich panels filled with PUF , Rockwool , PIR or any material based on the room and process requirement . Air is passed through HEPA filter (H13 or H14) using High pressure Air handling units (AHU) and HVAC systems .

Bacterial growth is kept at minimum by using Air conditioning with regards to Temperature and Humidity and also by avoiding sharp corners .

MODULAR CLEAN ROOMS



Modular clean rooms are used for setting up clean area by using wall panels or softwalls or combination . FFU (Fan filter units) are installed on the top . Air passes vertically down through HEPA filters . Air exits from the bottom of the soft walls / stand alone walls . This is always a single pass .

The inner height is kept between 7 ft to 10 ft .Softwalls are solid clear vinyl curtain. Lights are provided at the ceiling in the grid . The cleanines can be maintained at any level from ISO 3 to ISO 8

Constructional features :

- Side walls are soft vinyl or sandwich stand alone
- Flooring can be antistatic or epoxy
- Coving can be Aluminum , Food grade PVC or EPOXY
- Poly carbonate clear view panels
- Support from the roof for the ceiling
- Supplementary air conditioning

Door and view panels

Fire Rated Doors

Chempharm manufacture fire rated door (2 hours rating) duly Certified by CBRI (Central Building Research Institute Roorkee) one of the Indians prime and prestigious institutes recommended for buildings in India

Fire rated Doors are fitted with suitable door panic bar/push bar. The infill is low rise strongly boiled Rockwool. The outer sheet's is thickness and Door jab, view glass are as per norms. Size's of single door and Double door are tailor made

Non Fire Rated Doors

For all clean room application metallic, power coated finish

View Panel

Vacuumized double toughness, size or as per requirements and produce in house for Clean room and general application



CBRI test certificate of fire rated doors.

TEST SCHEDULE 1/11 (Reference No. - FR 0555)		
1. Name of the Laboratory	Fire Research Laboratory CBRI-Central Building Research Institute Roorkee-247 017	
2. Name of the Party	M/S Chempharm C-71, Sector-65, Noida-201 301 (U.P)	
3. Name of the Test	Fire Resistance Test	
4. Date of Test	February 04, 2016	
5. Ambient Temperature	15°C	
6. Fire Exposure	As per IS:474 Part-20 & 22, IS:3014 Part-2, 1988	
7. Applicability of Test Criteria	Stability: Yes Integrity: Yes Insulation: No	
8. Specimen Details	Double Leaf Single Swing M.S Composite Fire Door with Vision Panel Door Frame Height: 2235 mm Width: 1503 mm Thickness: 125 mm Door Panel Thickness: 45 mm	
9. Specimen Construction	As shown in Figure-1 and Figure-2 (Fig.No. 101 - (55/91) and 1/1-0455(2))	
10. Door Type	Uninsulated	
11. Door Insulation	Open into the furnace chamber	
12. Intended Test Duration	120 Minutes	
Test Results		
The observations of the test reveals that the Double Leaf Single Swing M.S Composite Fire Door (Uninsulated) with Vision Panel specimen has been found to be able to withstand standard fire exposure for 120 min. (One hour) test duration only with respect to stability, and integrity only.		
(Sushil Kumar)	(Narendra Kumar)	(Dr. Birn Singh)
<p>Information provided in this certificate pertains to the specific specimen submitted for the test and tested. CBRI is not liable for any other commercial purposes. All procedural, legal, and / or operational matters will be the responsibility of the party using this result. Accepting / Planning the results party or fully liable with the testing agencies.</p>		
<p>संशोधन विभाग, केंद्रीय भवन अनुसंधान संस्थान CBRI - Central Building Research Institute प्लॉट - 7, कानपुर-दोहाड़ रोड, रूरेक - 247 607, U.P., INDIA</p>		
<p>Notes : This original only is valid. Third parties using copies are doing so at their own risk.</p>		

SPECIFICATION OF CHEMPHARM SANDWICH PANEL

GENERAL ARRANGMENT DRAWINGS

PANEL RANGE

SPECIFICATIONS

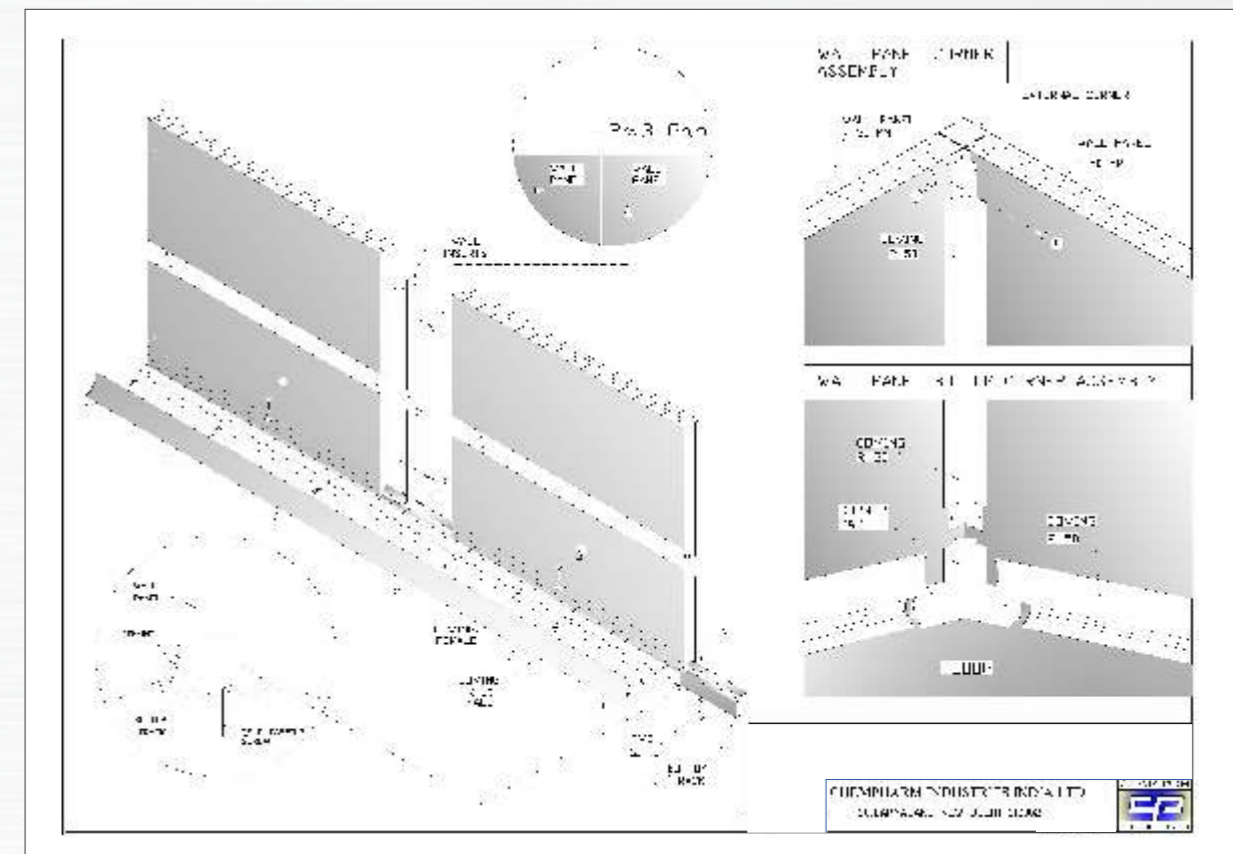
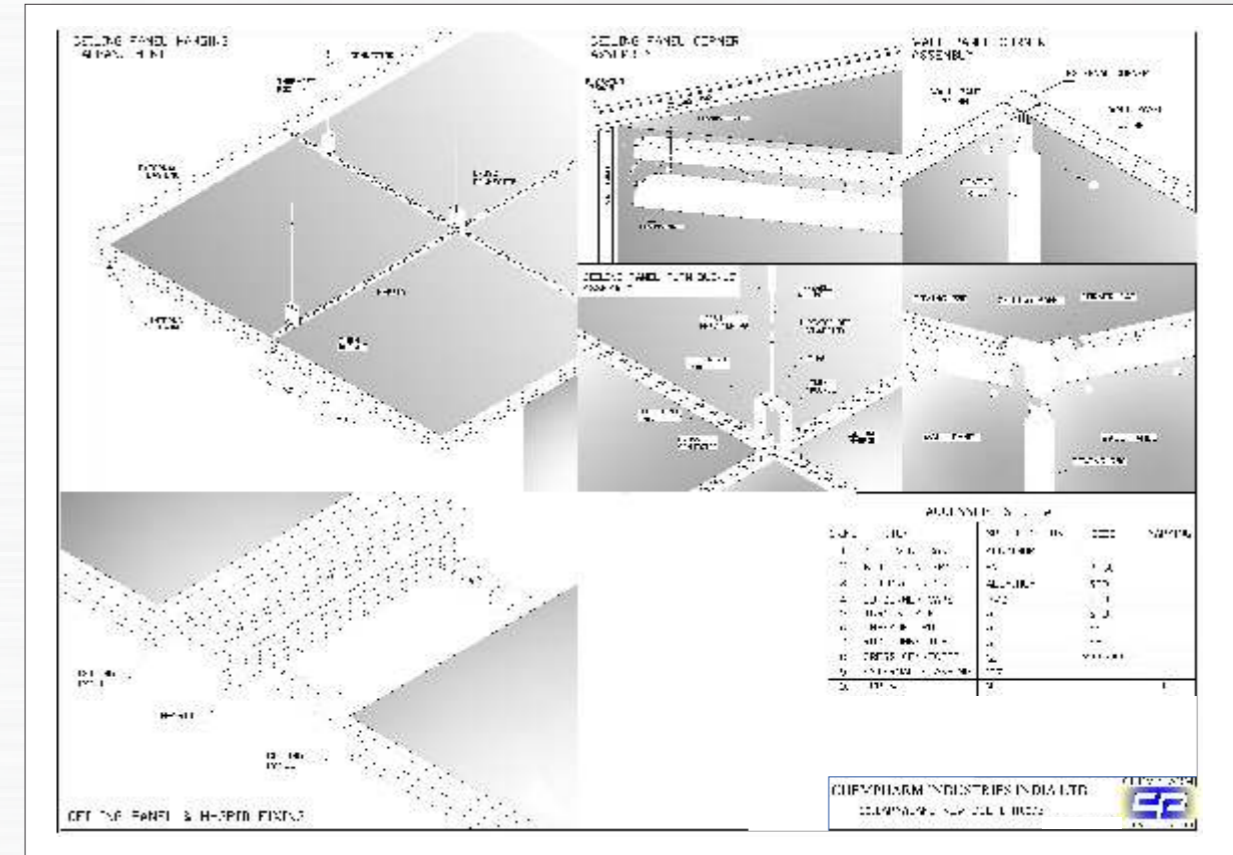
MODULAR DOUBLE WALLED PANELS

MOC

Skin	PCGI, PPGI, SS
Structural frame work	GI
Insulation	PUF(40+2Kg/m3/ ROCKWOOL(96Kg/m3)/(144 Kg/m3)
Connecting profile	box type PVC profile, C Channel
Base Profile	Box profile GI
Sealant	silicon
Dimensions	
Width	1200mm
Height	upto 5000mm
Panel thickness	30/50mm/60mm/100mm/ 120mm/150mm/180mm.
Coating thickness	60-80 micron For PCGI
Finish SS	matt finish
PPGI/PCGI	as per sample

PANEL PERFORMANCE DETAILS

Panels:	Standard / Fire Rated
Doors:	Standard/Fire Rated
Mechanical :	load bearing 150-200kg/m3
Acoustical:	In accordance with ISO Standard 46B
Surface Resistivity:	Avoid static build up as per ISO Standard
Chemical Resistance:	Compatible to the test Alkalinity/Acidic etc.



HVAC / BMS & ELECTRICAL SYSTEMS



In order to maintain a controlled environment in which the airborne particle / Bacterial growth in any clean room to be reduced and minimized, it is important to control Temperature, Humidity and filtration level. Chempharm is adept at designing and fabricating the right – Heating , cooling and Ventilation system for clean room operations.

HVAC is integrated into the building framework so it is very important to work out the proper design by understanding the correct specifications at the first stage, making modifications at a later date is time consuming and expensive. Chempharm has the adequate competency and team with good experience to undertake such task.

The design, installation, commissioning, and qualification of cleanroom HVAC systems is one of the top considerations in many industries, particularly for pharmaceutical, biotechnology healthcare facilities.

HVAC, BMS & ELECTRICAL SYSTEM

Our USP in offering HVAC System

- Low & High with Energy efficient
- Ahu, Chilled water, with Valueable drive
- Heat Recovery System wherever needed
- Gel type Heap & Housing(in house manufacturing)
- BIBO / Bag In Bag Out
- Factory Built Ducts

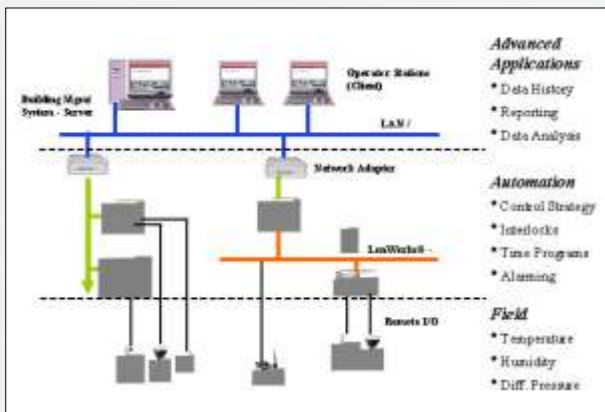
ELECTRICALS

Chempharm has expertise to undertake electrical systems for HVAC and clean room systems . Our team is capable of offering you the following services.

- Creating functional specifications,
- Single line diagram,
- Schematic diagrams,
- Wiring diagrams,
- Electrical panel designs,
- Cable harness and so on .



BMS (BUILDING MANAGEMENT SYSTEMS)



- BMS (Intregrated Building Management System) & Electrical System.
- System for Air Flow, Temprature, RH & PR Differential monitory and controls.
- Sequencing, Log & Trending.
- Sytem Offered are Part II CFR 21.
- All items used in the system are from Standard & Reputed Manufacture Live.
- Low Voltage system.
- We have In-house team of trained dedicated BMS resources to take up you new modification & maintainence.

AIR FILTERS AND HOUSINGS

HOUSINGS – STANDARD, HOUSING BIBO (BAG IN BAG OUT)

STANDARD HEPA HOUSING

Made of MS Powder coated or Stainless steel depending upon the application . The housing is a heavy duty with zero leakage concept . A special in-built port for DOP / Validation is provided so that after the instalation of the filter in the housing the DOP check can be done online / in-process.

BAG-IN/ BAG OUT HOUSING

In a very critical applications like Toxics, biological or carcinogenic where the product being filtered should not come in contact with the Human being or powder traces should not fly in the atmosphere , the special arrangement of the filter housing is used which is called BAG-IN/ BAG –OUT FILTER HOUSING .

The housing is designed in such a manner that bagging method of a filter is a full proof arrangement to avoid contamination contact . Filters are loaded from the side by using specialized heavy duty plastic bags (as shown in the below picture). A special care is taken for the sealing arrangement throughout the housing and while loading and unloading the filters.



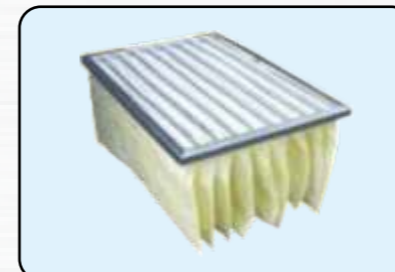
VALIDATION, DOCUMENTATION AND CERTIFICATIONS

Chempharm undertakes validations of the clean room and equipment's as per international standards. Particle count, Smoke test ,Laminarity / Air flow pattern test , Pressure balancing etc.

We have highly experienced team to prepare documentation as per GMP and other international norms for clean room and equipment's like IQ, PQ , DQ & OQ

HEPA, BAG FILTERS, MICROVEE, PRE-FILTERS

In house manufacturing of Hepa and Multi-pocket bag filters available with all testing facility as per International FED 209 Std.



CLEAN ROOM EQUIPMENTS



Dynamic/static passbox



Ceiling Suspended Laminar Air Flow



Horizontal Laminar Air Flow



Crossover



Dedusting Tunnel



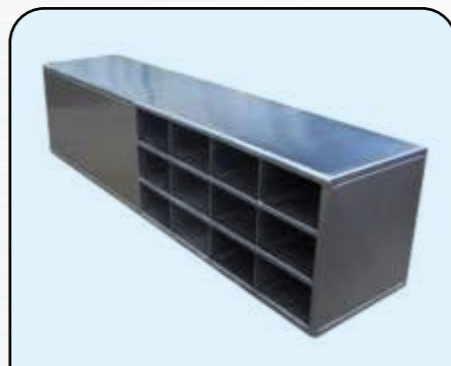
Air Shower



Dispensing Booth



Garment Storage



Shoe Rack

CRITICAL EQUIPMENTS CONTAMINATION SOLUTION



Bio safety

WHO has long recognized that safety and , in particular , biological safety are important issues. Micro-organic and a pathogens that usually causes moderate risk to high risk are handled with special care and design of the bio-safety equipments. Bio-safety equipments are designed to handle Micro-organic and pathogon that causes moderate to high risk factors.

Vaporized Hydrogen Peroxide (VHP) is used for sterilization in a dynamic Pass Box by using H₂O₂ generator. The device is essential when the products component to be sterilized is not autoclavable. The Pass Box can be installed between two different classified area.



VHP



Isolator

Isolator are equipments creating a enclosed controlled or clean classified environment in which a process or activity can be placed with a high degree of assurance that effective segregation will be maintained between the enclosed environment, its surrounding and any personnel involved with the process or manipulation . Isolators can be of closed or open design and may be maintained at positive or negative pressure to their surroundings.

Human operators pose the greatest risk to product contamination during "conventional cleanroom" aseptic processing. Many different barriers of varying capabilities have been used to separate operators from critical sites during aseptic processing with the objective of reducing the probability of a contaminate unit. These range from simple flexible curtains used on many traditional aseptic processing lines to advanced aseptic processing in isolators. A Restricted Access Barrier System (RABS) is an advanced aseptic processing system that can be utilized in many applications in a fill-finish area. RABS provides an enclosed environment to reduce the risk of contamination to product, containers, closures, operator and product contact surfaces compared to the risks associated with conventional cleanroom operations. RABS can operate as "doors closed" for processing with very low risk of contamination similar to isolators, or permit rare "open door interventions" provided appropriate measures are taken.



RABS

Stainless Steel Furniture for Pharma / Electronics / Labs / Healthcare / Food and Dairy industry

Chempharm with its state of the art steel fabrication facility is one of the most popular brand for steel furniture .
CP-DZYN is our official brand for steel fabrication items

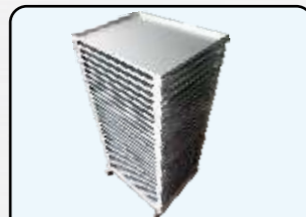
Our uniques selling point are -
HIGH END DESIGN , EASE OF USE , TAILOR MADE MATERIAL AND FINISH SELECTION

Chempharm undertake turnkey project for setting up all stainless steel items as shown below for industrial kitchen

We can offer the 360 degree solution fully integrated with Appliances like heaters, Burners, Microwave , Hot plates etc



Pallet



Strackable Trays with Trolley



Vial collection Tray



Stool Revolving



Bain Maire



Dining Table and Chair



Chapati Helping Table



Bench



Steel Bench



Bench With Shelves



Locker



Soil Dish Landing Table



Clean Dish Rack



Dust Bin



Hand wash/Scrubbed



Ladder



Cage



Perform Task



Fresh Glass Table



Kitchen Utility Trolley



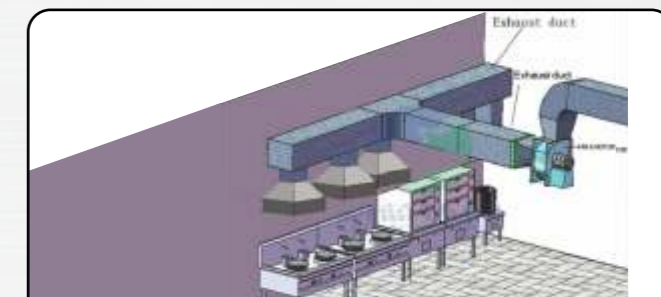
Sink Unit



Stainless Steel Lab

Chempharm can provide stainless steel furniture, tables and shelves with sinks and racks.

Chempharm can provide turnkey solution for exhaust system with SS hood, Ducting and Blower.



Stainless Steel Exhaust