



**ROLLO-MATIC FILTER**

Available in different Sizes

AHU's, fertilizers plants refineries etc.

Non woven Synthetic/Glass Fibre

99% down to 5 Microns

G3, G4, F5

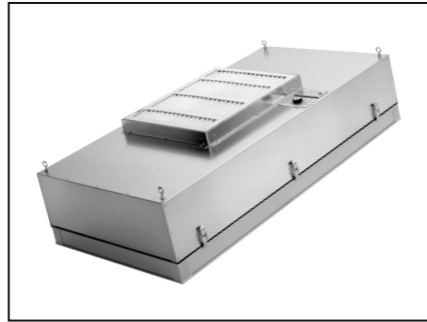
2.5M/S

6.5-10

12-20

No

80°C



**FFU/BFU(Fan Filter Unit)**

STD Size - 2'x2'  
STD Size - 2'x4'  
For 500 & 1000 CFM

Mainly used for Electronic Industries, Cleanrooms and Chemical labs etc.

SS/GPSP power coated frame with Filter Blower

99.995 % down to 0.3 Microns

H14

Varied with application

10-20

20-40

No

100°C



**FILTER HOUSING**

Standard Housing for 2'x2' 2'x4'

For HVAC System

S S, Aluminum, MS painted.

NA

N.A

N.A

N.A

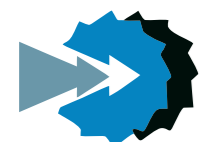
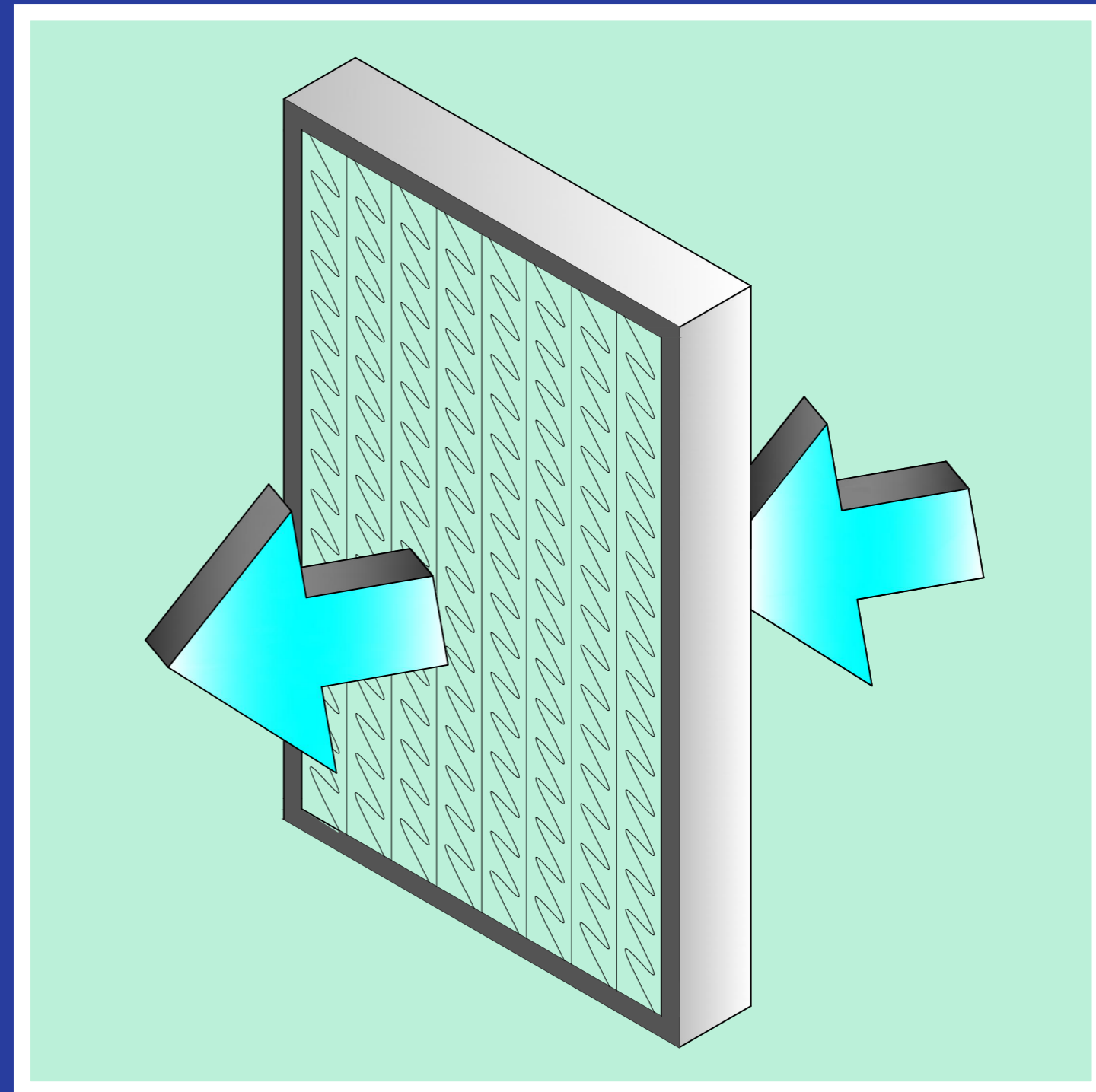
YES

YES

200°C



## NO MORE DUST HEADACHES

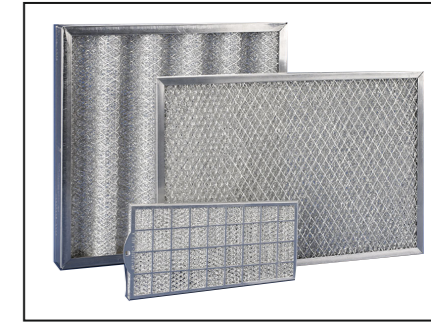
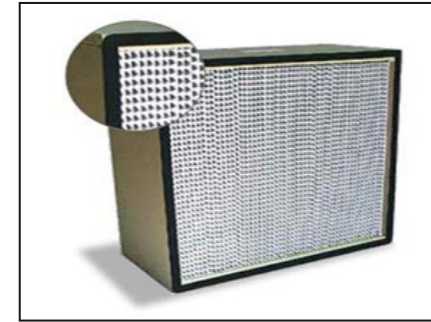
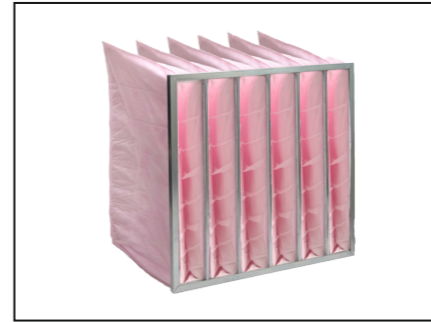
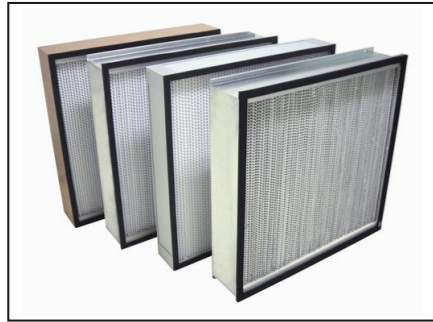


**Factory:**  
148, HSIDC Industrial Area, Kundli, Sonapat-131028, Haryana,  
Ph.: +91 -0130-2219631, Fax: +91 -0130-2219632

**Registered Off:**  
60 Darya Ganj, Daya Nand Marg, Delhi 110002.  
Contact: Sales@chempharmindia.com

[www.chempharmindia.com](http://www.chempharmindia.com)

**Making Waves in Separation and Purification**



ITEM

**DEEP PLEAT HEPA FILTER**

**HEPA MINI PLEAT FILTER AND HEPA GEL TYPES SEALING CONSTRUCTION WITH GEL TYPE HOUSING**

**MICROVEE FILTER**

**MULTIPOCKET BAG FILTER**

**SEMI ABSOLUTE TYPE FINE FILTER**

**METALIC WOOL FILTER**

SIZES

Available in different sizes with thickness 150 mm/300mm..

Available in different sizes with 75 mm & 117mm..

Available in different size of thickness 25 mm to 300 mm in flanged & cassette/Box Type.

Available in different sizes with 6/8/10 pockets.

Available in different sizes of depth 150 mm & 300 mm.

Available in different sizes of thickness 25 mm to 100 mm.

APPLICATION

Pharma /electronic /labs Etc

Nuclear installation. pharmaceutical industry, electronic, fiber/film plants, hospitals, Labs etc.

For fine filtration in air conditioning, ventilation systems etc. pre filter to absolute HEPA filters.

Spray booths, fibre industry, fertilizer plants, pre filter to absolute filter.

Fine filter for gas turbine, computer rooms, fiber industry, food industry etc.

Pre filter for high temp. application.

CONST. FEATURE

Glass Fabric

Micro Glass fibre pleated in a frame sealed with epoxy. media or GEL

Non-woven (synthetic or dry) stitched with GI mesh/aluminum expanded metal. Pleats are sperated with combs. Enclosed in a metallic frame.

Non-waven melt blown/ thermal bonded/glass media pockets enclosed in a metallic frame sealed with epoxy.

Glass fibre pleated with spacers & enclosed in a frame.

Metal wool packed properly in between fine mesh & supported by expanded metal on both side enclosed in a frame. made of SS 304

FILE EFFICIENCY (IN MICRONS)

99.9997% down to 0.3 microns

99.997% down to 0.3 Microns (as per D.O.P. penetration test) (Cleaniness as per 209 B&C)

99% down to 5 Microns

95% down to 2 Microns 8.5 Microns

95% down to 0.3 Microns 1 Microns

90-95% down to 10 Microns

CLASSIFICATION

H14

H14

G4, F5

G4, F5, F6, F7, F8, F9

E10, E11, E12

G1 to G3

RECOMENDED AIRVELOCITY

0.5to1.3 m/s

0.5 to 1.3M/S

2.5 M/S

2.5 M/S

1.5 to 2M/S

2 to 2.5 M/S

INITIAL P IN MM WG

20-25

20-25

6.5-12

15-25

20

6.5-12

FINAL P IN MM WG

40

40

12-20

40

40

20-30

REGENERATABLE

No

NO

Yes/LIMITED

Limited

NO

Yes/LIMITED

MAX. WORKING TEMP. IN

100°c

100°C

100°C

80°C

80°C

300°C



**AIR FILTERS**

**AIR FILTERS**

